

Proposition 1 DFW-Funded Cap and Trade Project

CHILDS MEADOW BEAVER AND BEAVER DAM ANALOGUES

Progress and Updates

Meadow Complex Overview



UC Davis - Sarah Yarnell
(hydrology, geomorphology, restoration)



The Nature Conservancy – Kristen Podolak, Rodd Kelsey, Andrea Craig,
(restoration and grazing mgt, geomorphology, uav)



UC Davis – Evan Wolf
(carbon, restoration)



Point Blue –Ryan Burnett
(birds, restoration)



USFS PSW – Karen Pope
(amphibians, restoration)

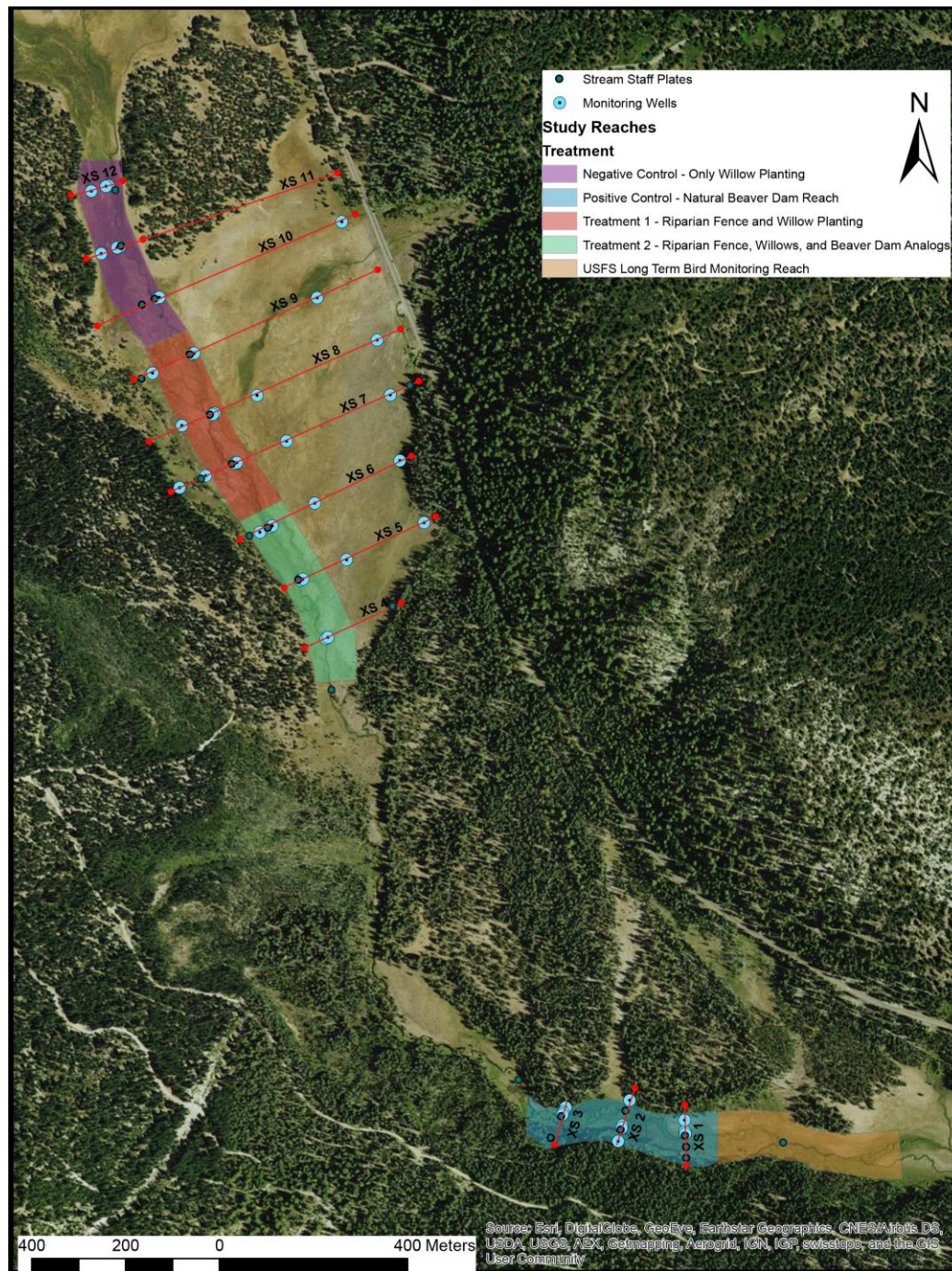
Meadow Complex Overview



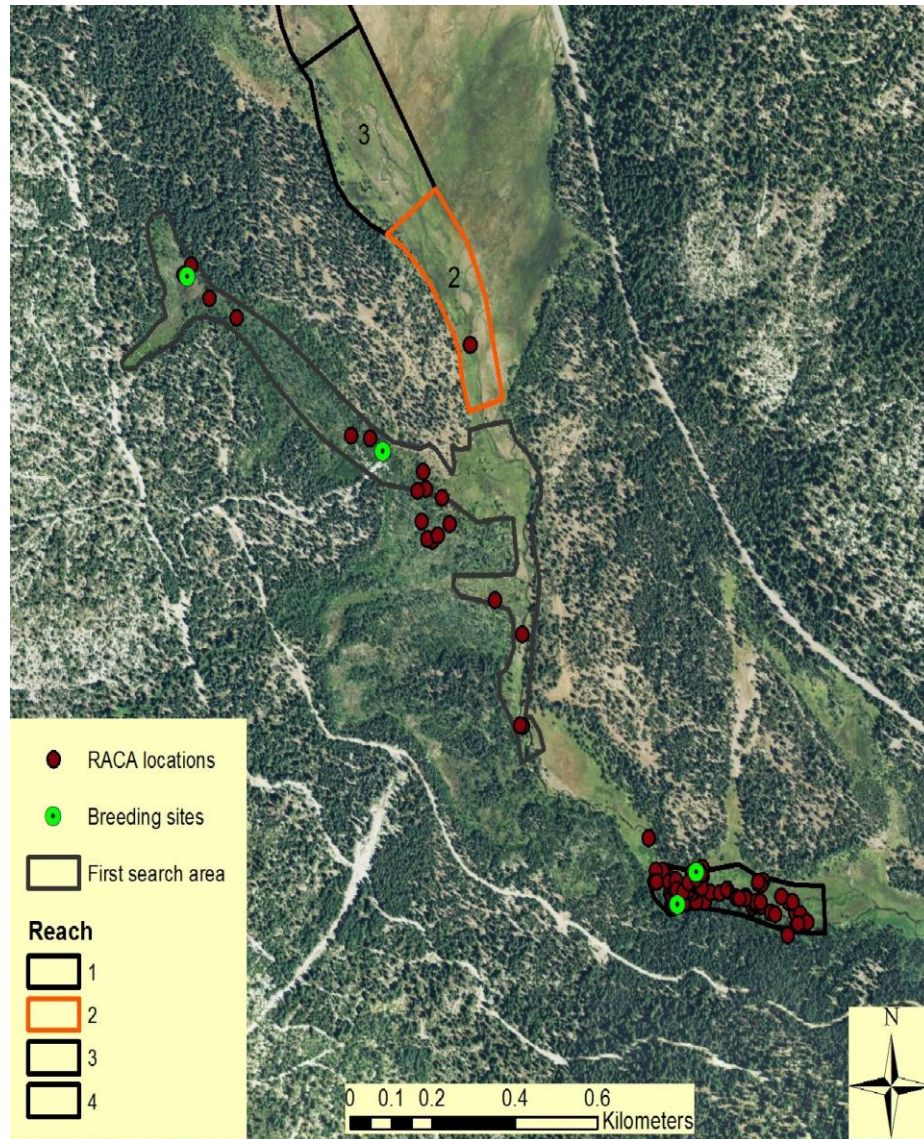
U.S. Fish & Wildlife Service
Jacob Byers and Sheli Wingo
Partnership Program
(dewatering, permitting, restoration)



| | |
|---|---|
| Plumas Corporation Leslie Mink (Permitting) | Scott River Watershed Council Charna, Leslie, Peter (BDA Construction) |
|---|---|

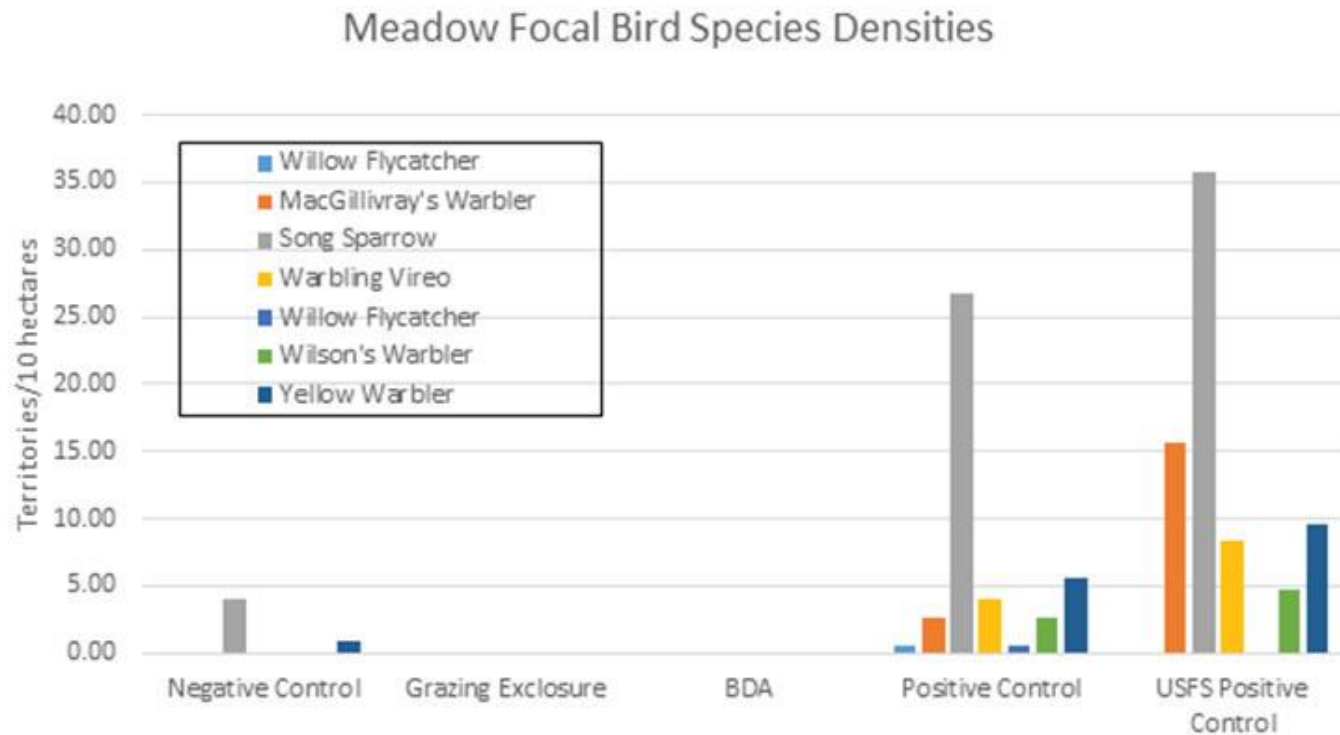


Pre-Restoration meadow conditions



Critical species: Cascades frog
Karen Pope's research

Pre-Restoration meadow conditions



Critical species:
Willow flycatcher
Ryan Burnett's research

Pre-Restoration meadow conditions



Same day, Oct. 2014 BDA Reach pre-restoration



Natural beaver pond reach

Study and Restoration Goals

- Assess the effects of restoration (400 m) on meadow hydrology, geomorphology, and ecology using a classic BACI design.
- Increase carbon storage above and below ground;
- Increase groundwater levels and extent of surface water;
- Increase habitat for sensitive meadow species.



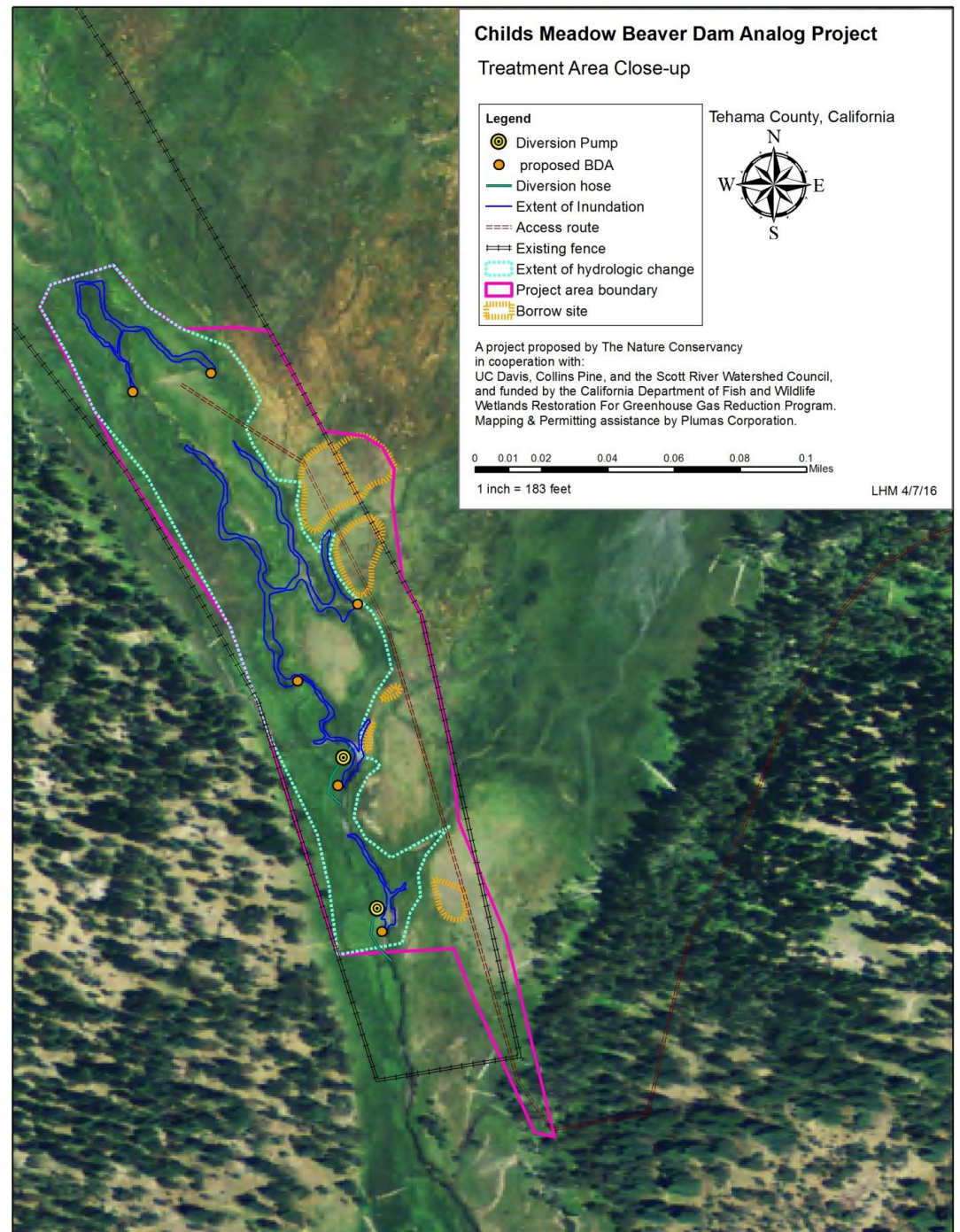
Timeline

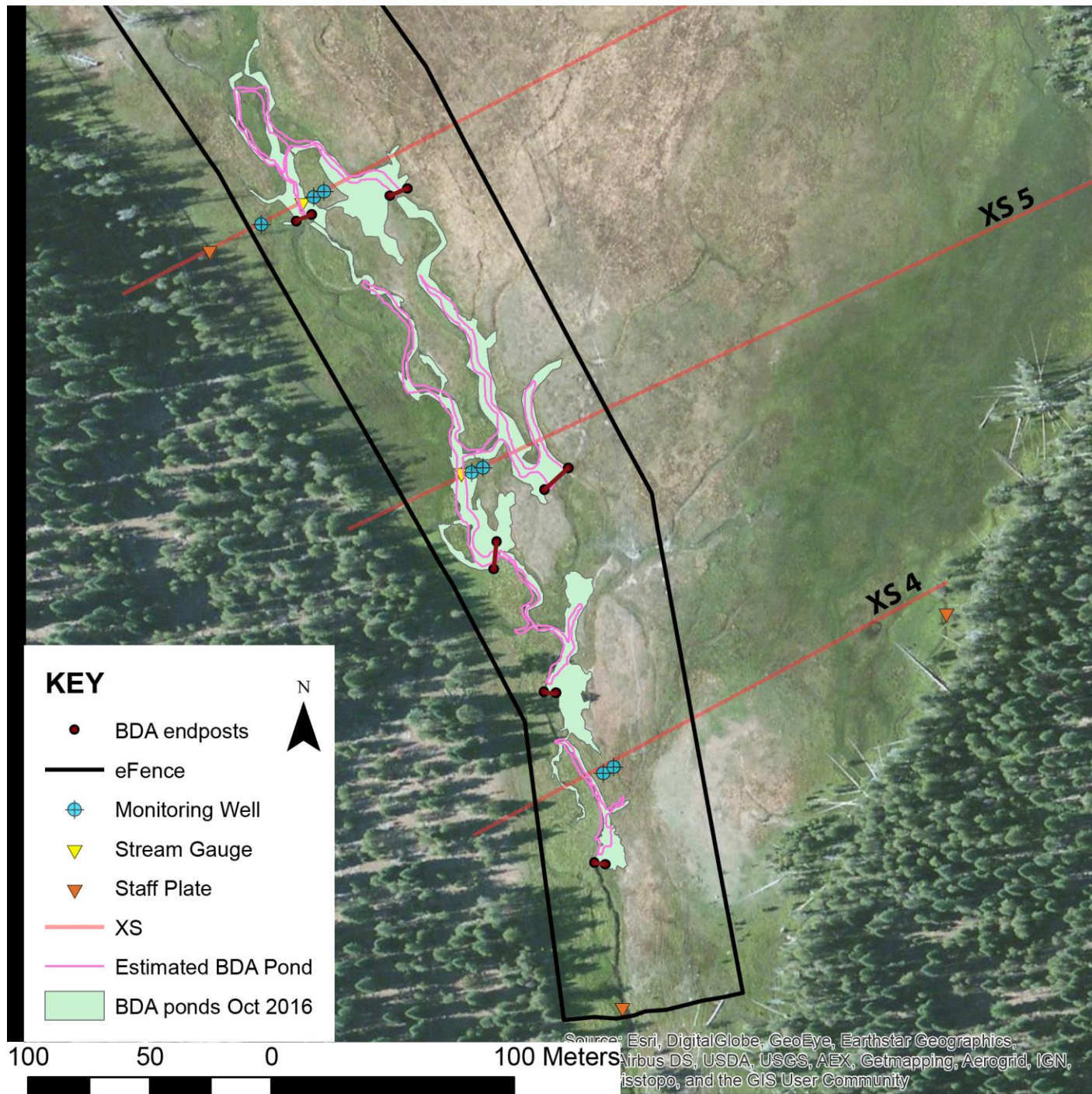
Fall 2015

- Cattle exclosure fence
- Planted willow stakes

Fall 2016

- Installed 6 BDAs





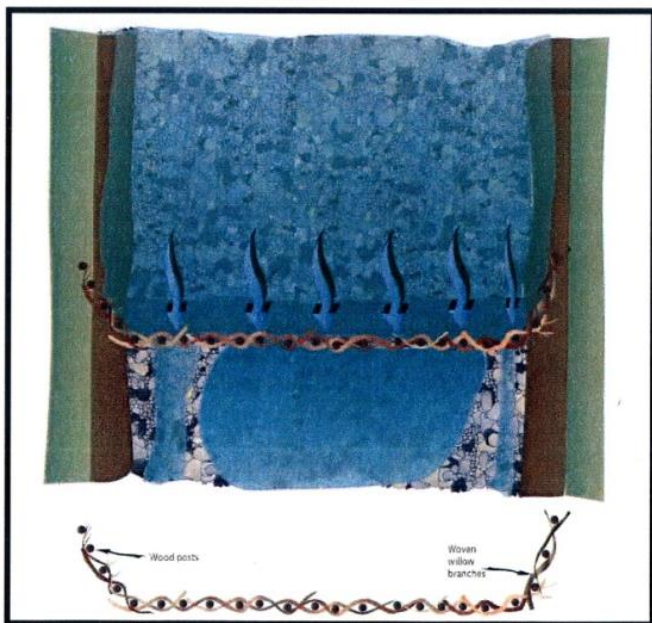
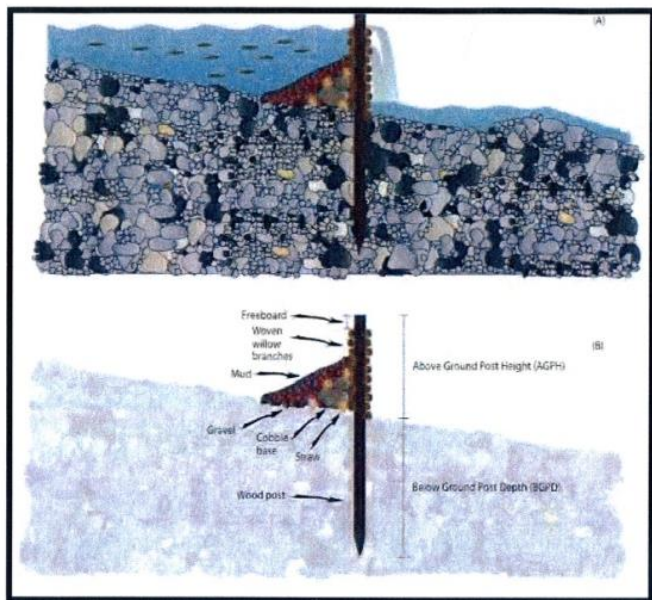


Figure 1. Photo of page 84 from: Pollock, M.M., G. Lewallen, K. Woodruff, C.E. Jordan and J.M. Castro, editors, 2015. The Beaver Restoration Guidebook: Working Beaver to Restore Streams, Wetlands, and Floodplains. US Fish and Wildlife Service, Portland Oregon. 189 pp.

Table 1. Project area acreage.

| Project Area | Acres |
|--|--------------|
| BDA treatment area boundary | 8 |
| BDA treatment reach estimated extent of hydrologic change (improved floodplain function) | 4.6 |
| BDA treatment reach inundation | 0.37 |
| Fine soil source areas | 0.5 |
| Willow gathering area | 4.6 |
| Pickup truck access beyond existing roads | 0.32 (1375') |

Table 2. Material estimate.

| Material | Quantity |
|-----------------|------------------------------|
| Poles | 96 poles totaling 3.2 cu yds |
| Willow branches | 9 cu yds |
| Hay | 3.6 cu yds |
| Fine soil | 5 cu yds |
| Cobble | 5 cu yds |

